

J O B F A I R

Come along to hear all about our exciting opportunities
on **Monday 25th September 2017 3-7pm**

at **halow** offices, Carroll House, 11 Quarry Street, Guildford, Surrey, GU1 3UY



We are seeking fun, patient, reliable and motivated people to join our Supported Living Service team. (Opportunities in the Guildford and Cranleigh area and across Surrey) **(Drivers with own car)**

halow's care offers 1:1 and shared support workers of **halow** Buddies supporting young people with a learning disability in their own homes and in the community . As a result of our excellent reputation for helping people to be more active and independent we have more and more referrals and are growing our team! We have full time, part time and flexible hour vacancies to suit our young people and fit around your own commitments.

halow's service offers our young people 1:1 support, promoting life skills, independence, social skills, leisure opportunities and assisting young people to access the local and wider community in ways which best suit them.

With a fulltime salary of £17,500 pa, 37.5 hour working week (across a shift pattern) and a generous annual leave allowance this is an excellent opportunity and a rewarding job making a real difference every-day to young people with a learning disability. Flexible Hours contracts are £8.50 per hour.

Full training and support is guaranteed for this high quality, progressive service.

"I have a great time with the young person and I know I am doing something really worthwhile!"



Recruiting Now!

Do you have what it takes to be a
**halow Supported Living and/or Community
Outreach Buddy ?**

(Support Workers with a difference!)

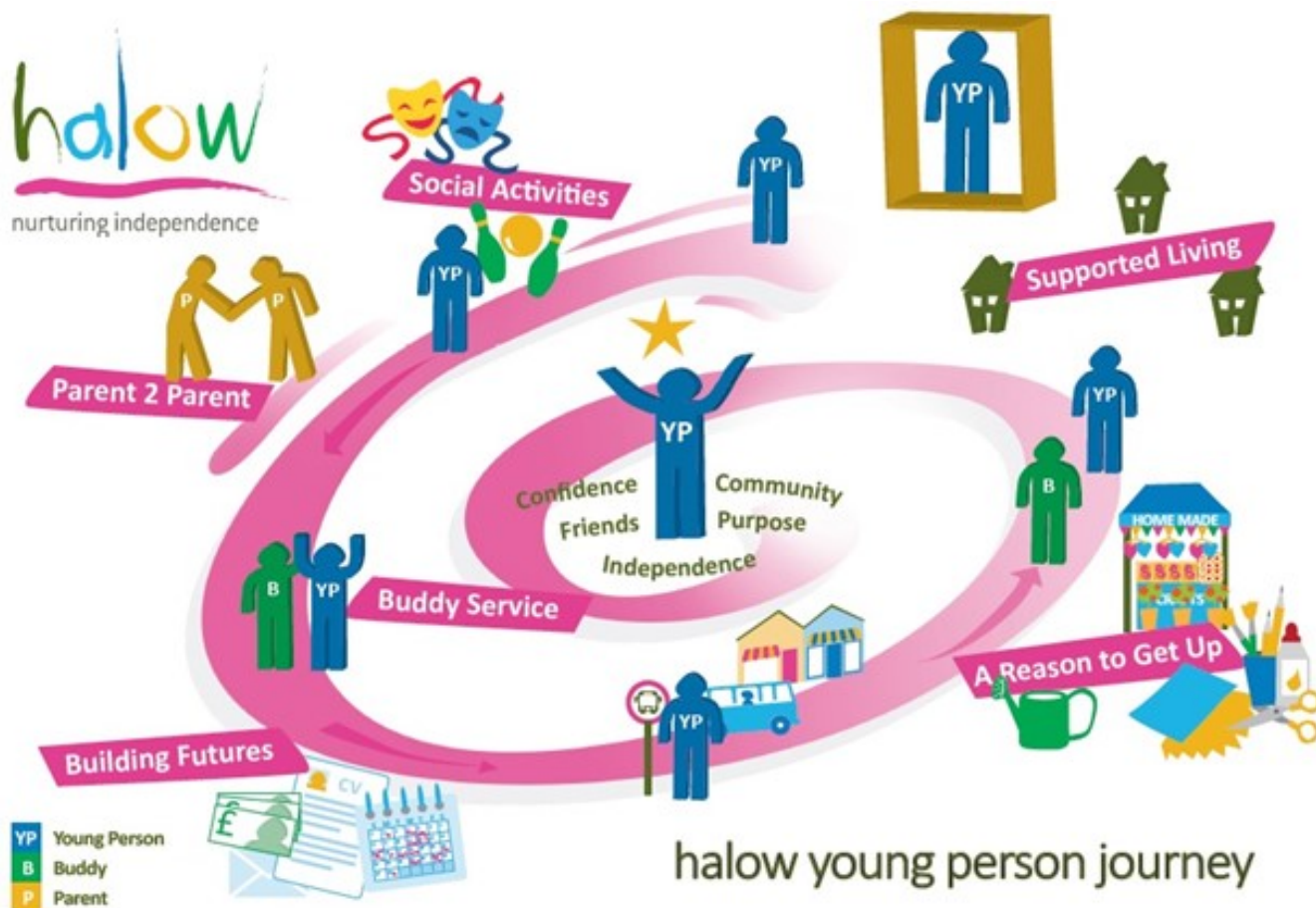
Good salary, annual leave and the most rewarding
job in town!

HR@halowproject.org.uk



Registered charity number: 1116773

Patron: **Damon Hill OBE**



At the **halow project** young people with a learning disability are at the heart of everything we do. **halow** young people have to be brave every day facing a life where they feel they might not fit in, face prejudice or barriers when joining in with events that we take for granted. At **halow** every day we make a difference to young people's lives by helping them to find their voice, understand the choices available to them, nurture and enable them to connect with and enjoy a full life in their community.

The spiral diagram above shows how our innovative programmes provide a pathway for young people to become active members of their community with confidence, friends, a sense of purpose, and support to live as independently as possible. We provide opportunities for them to play an active role in their community and live full and active lives.

We have up to several **halow care** team for people who can support others with their life skills, home making skills and independence. A typical day might be supporting someone to get ready for college, get there on time, help with preparing lunch, shopping, tidying and planning the evening's entertainment. Every day can be different but every day you will be making a real difference to someone's life! No experience needed as full training is guaranteed!

Check out www.halowproject.org.uk for more information, or
come to the halow Job Fair Monday 25th September 2017 3pm-7pm
halow, 11 Quarry Street, Guildford GU1 3UY